



LLOYD & JONES
PROCUREMENT AND SUPPLY

Workwear Catalogue



2023 Version



LLOYD & JONES
PROCUREMENT AND SUPPLY

Service Beyond Expectation

Since its inception in 1983, Lloyd & Jones has grown into one of the largest Independent Industrial Supply companies in the UK, with over 18 Branches and Trade Counters spread across the country.

With our ever growing product range and in house product expertise we are certain we will have the resource and flexibility to suit your specific requirements.

Products available from any of our trade counters or online at www.lloyd-jones.com

*Your 24/7 Solution For
Industrial Supplies*

CONTENTS

Men’s Clothing 4 - 6

Hi Vis Clothing 6 - 8

Women’s Clothing 9 - 10

Accessories 10

Brands 11

Size Guide 12 - 13

Standards 14

Index 15



**Embroidery and printing services
available on selected products.**

- Display your brand with our professional printing and embroidery service
- Great for workwear and corporate uniforms
- A range of colours and sizes available
- Individual items or bulk orders accepted

For information and pricing, please contact your local branch:



The products listed are a part of our core stock. Please contact your local branch or area representative for details on our extended clothing range.

MEN'S CLOTHING

T-SHIRT

- Crew neck t-shirt with seamless double-needle on the collar
- Taped neck and shoulders for extra comfort
- Twin needle sleeves and hem
- Fabric: 100% Cotton 180g
- Available in Black or Navy
- Sizes: S-4XL

fastrack®



Part No.	Colour	Size
TSHIRTBLACK	Black	S-4XL
TSHIRTNVY	Navy	S-4XL

SHISPAR POLO SHIRT

- Mens polo shirt with a three button placket
- Raised details on the collar
- Fabric: 50% cotton, 50% polyester, 180g
- Available in Black or Navy
- Sizes: XS-5XL

fastrack®



Part No.	Colour	Size
POLOBLACK	Black	XS-5XL
POLONAVY	Navy	XS-5XL

DELUXE SHORT SLEEVE SHIRT

- Mens deluxe short sleeve shirt with a classic collar and front button fastening
- 1 chest pocket
- Back tucks in yoke
- Fabric: 65% polyester 35% cotton 115g
- Available in White, Black or Sky
- Sizes: 14"-22"

Smart Wear



Part No.	Colour	Size
SHIRTSSWHITE	White	14"-22"
SHIRTSSBLACK	Black	14"-22"
SHIRTSSBLUE	Sky	14"-22"

DELUXE LONG SLEEVE SHIRT

- Mens deluxe long sleeve shirt with a classic collar and front button fastening
- 1 chest pocket
- Back tucks in yoke
- Button cuffs
- Fabric: 65% polyester 35% cotton 115g
- Available in White, Black or Sky
- Sizes: 14"-22"

Smart Wear



Part No.	Colour	Size
SHIRTLSWHITE	White	14"-22"
SHIRTLSBLACK	Black	14"-22"
SHIRTLSBLUE	Sky	14"-22"

LASCAR SWEATSHIRT

- Mens sweatshirt with drop shoulders
- Knitted rib cuffs, collar and waistband
- Fabric: 50% cotton 50% polyester 280g
- Available in Black or Navy
- Sizes: XS-5XL

fastrack®



Part No.	Colour	Size
SWEATSHIRTBLACK	Black	XS-5XL
SWEATSHIRTNVY	Navy	XS-5XL

TAFT HOODY

- Hoodie sweatshirt with a draw cord & eyelets on the hood
- Taped back neck for extra comfort
- One front central pocket with two side openings
- Ribbing on the cuffs and hem
- Fabric: 50% polyester, 50% cotton, 280g
- Available in Black or Navy
- Sizes: XS-4XL

fastrack®



Part No.	Colour	Size
HOODIEBLACK	Black	XS-4XL
HOODIENAVY	Navy	XS-4XL

MEN'S CLOTHING

BATURA FLEECE

- Mens fleece with a front full zip fastening and interactive zip, Comfort cuffs, 2 hip pockets with zip closure
- Bungee shock cords at the internal hem for adjustment
- Fabric: 100% polyester antipil fleece, 300g
- Available in Black or Navy
- Sizes: XS-4XL



Part No.	Colour	Size
FLEECEBLACK	Black	XS-4XL
FLEECENAVY	Navy	XS-4XL

FLINT SOFT SHELL JACKET

- Mens softshell jacket with a front zip fastening
- Two layer fabric construction
- 2 side zip pockets. Inner storm flap (running on from the top zip cover)
- Bungee shock cords at hem
- Bungee adjuster
- Fabric: 94% polyester, 6% spandex, 260g 2 layer fabric construction
- Available in Black or Navy
- Sizes: XS-4XL



Part No.	Colour	Size
SOFTSHELLBLACK	Black	XS-4XL
SOFTSHELLNAVY	Navy	XS-4XL

BUTE OUTER JACKET

- Mens waterproof casual jacket with a heavy duty two-way front zip fastening and velcro double storm flap
- Detachable & concealed hood with lining, velcro fastening & bungee shock cord & toggles
- 2 x front zip pockets with welt cover, 1 map pocket, 1 internal zip patch patch
- Internal bungee cord & toggles on the inside hem
- Velcro adjustable cuff with a rubber adjuster
- Mesh lining on the main body
- Fully taped seams
- Fabric: 100% poly breathable & waterproof Hydra-Por micro fibre twill / 100% polyester mesh lining
- Available in Black or Navy
- Sizes: S-4XL



Part No.	Colour	Size
JACKETWPBLACK	Black	XS-4XL
JACKETWPNAVY	Navy	XS-6XL

JADITE SOFT SHELL GILET

- Mens softshell gilet with a front zip fastening, inner storm flap & top zip cover
- Two layer construction
- 2 side zip pockets
- Bungee cord & adjuster on the inside hem
- Back neck hanger loop
- Fabric: 94% polyester, 6% spandex, 260g 2 layer fabric construction
- Available in Black, Grey or Navy
- Sizes: XS - 4XL



Part No.	Colour	Size
ORBSS2GV4BLACK	Black	XS - 4XL
ORBSS2GV4GREY	Grey	XS - 4XL
ORBSS2GV4NAVY	Navy	XS - 4XL

COVERALLS

- Coverall with concealed front stud fastening
- Elasticated sides
- 2 front chest pockets with stud fastening, 2 slant side pockets, 1 side rule pocket, 1 rear patch pocket, side entrance openings
- Hammer loop on the side
- Fabric: 65% polyester, 35% cotton, 205g
- Available in Black or Navy
- Sizes: 36"-56"



Part No.	Colour	Size
BSPCBLACK	Black	36"-56"
BSPCB	Navy	36"-56"

FLAME RETARDANT COVERALLS

- FR coverall with concealed popper stud front fastening
- 1 chest patch pocket with velcro flap, 2 slant side pockets with side access, 1 rule patch pocket on the leg
- Triple stitching on the front & back rise
- Sewn on FR reflective tape
- Certifications & Standards:
 - EN ISO 11612: 2008 (A1, B1, C1)
 - EN ISO 11611: 2007 (CLASS 1 A1)
- Fabric: 100% FR Treated Cotton, 320g
- Available in Navy or Orange
- Sizes: S-4XL



Part No.	Colour	Size
FLAME/NAVY	Black	S-4XL
FLAME/ORANGE	Navy	S-4XL

MEN'S CLOTHING

COMBAT TROUSERS

- Combat trousers with a front zip & button fastening and 7 belt loops
- Triple stitching on the front and back rise
- 2 slant side pockets, 1 jettied rear pocket with button & loop, 2 side leg pockets with button flap fastening
- 2 tucks on the front waistband
- Internal knee pad pockets, bottom loading
- Fabric: 65% polyester, 35% cotton, 245g
- Available in Black or Navy
- Sizes: S/R/L, 28"-50"



Part No.	Colour	Size
TROUSERBLACK	Black	S/R/L, 28"-50"
TROUSERNAVY	Navy	S/R/L, 28"-50"

SHORTS

- Work combat shorts with front zip & fly fastening
- Hook & eye fastening on waistband extension
- Elasticated on both sides of the waistband and 7 belt loops
- Triple stitching on the front rise, back rise and inside legs
- 2 slanted hip pockets, 2 side leg pockets with velcro pocket flaps, 2 rear pockets with velcro pocket flaps
- Front pintucks down the centre of both legs
- Fabric: 65% polyester, 35% cotton, 245g
- Available in Black or Navy
- Sizes: S-4XL



Part No.	Colour	Size
SHORTSBLACK	Black	XS-4XL
SHORTSNAVY	Navy	XS-4XL

HI VIS CLOTHING

IMMORTAL HI VIS VEST

- Hi-vis waistcoat with front velcro fastening
- Self coloured binding
- Sewn on reflective tape.
- Certifications & Standards:
EN ISO 20471: 2013+A1:2016
Area Of Visible Material Class 2
- Fabric: 100% Polyester Tricot 120g
- Available in Yellow or Orange
- Sizes: S-5XL



Part No.	Colour	Size
HVW	Yellow	S-5XL
HVWO	Orange	S-5XL

AVENGER LONG SLEEVE HI VIS VEST

- Jerkin jacket with velcro front fastening
- Sewn on reflective tape
- Certifications & Standards:
EN ISO 20471: 2013+A1:2016
Area Of Visible Material Class 3
- Fabric: 100% Polyester Tricot 120g
- Available in Yellow or Orange
- Sizes: M-4XL



Part No.	Colour	Size
HVWLS	Yellow	M-4XL
HVWLSO	Orange	M-4XL

MERCURY SHORT SLEEVE POLO SHIRT

- Hi visibility polo shirt with front three button placket fastening
- Contrast rib collar
- Sewn on reflective tape
- Certifications & Standards:
EN ISO 20471: 2013
CLASS 2
RIS 3279 TOM (Orange only)
- Fabric: 100% polyester
- Available in Yellow or Orange
- Sizes: S-6XL



Part No.	Colour	Size
HVP	Yellow	S-6XL
HVPO	Orange	S-6XL

ANDROMEDA LONG SLEEVE POLO SHIRT

- Long sleeve polo shirt with 3 button placket front fastening
- Grey contrast ribbed collar and cuffs
- Sewn on reflective tape
- Certifications & Standards:
EN ISO 20471: 2013
CLASS 3
RIS 3279 TOM (Orange only)
- Fabric: 100% polyester
- Available in Yellow or Orange
- Sizes: S-5XL



Part No.	Colour	Size
HVPLS	Yellow	S-5XL
HVPLSO	Orange	S-5XL

HI VIS CLOTHING

VIPER T-SHIRT

- Hi-visibility short sleeve t-shirt with sewn on reflective tape
- Certifications & Standards: EN ISO 20471: 2013 CLASS 2
- **RIS 3279 TOM (Orange only)**
- Fabric: 100% polyester, 160g
- Available in Yellow or Orange
- Sizes: S-4XL



Part No.	Colour	Size
HVTSHIRT	Yellow	S-4XL
HVOTSHIRT	Orange	S-4XL

SENTINEL SWEATER

- Sweatshirt with crew neck
- Grey contrast ribbed sleeve cuffs, hem band and neck band
- Sewn on reflective tape
- Certifications & Standards: EN ISO 20471: 2013 CLASS 3
- **RIS 3279 TOM (Orange only)**
- Fabric: 100% polyester
- Available in Yellow or Orange
- Sizes: S-6XL



Part No.	Colour	Size
HVSWEATSHIRT	Yellow	S-6XL
HVOSWEATSHIRT	Orange	S-5XL

CRUSADER FLEECE JACKET

- Fleece jacket with front zip fastening and interactive zip with reversible zip puller
- Two front zipped lower waist pockets
- Elasticated cuffs and hem
- Draw cord and toggles at the side of the hem
- Sewn on reflective tape
- Certifications & Standards: EN ISO 20471: 2013 CLASS 3
- Fabric: 100% polyester anti-pil fleece, 380g
- Sizes: S-4XL



Part No.	Colour	Size
HVFJ	Yellow	S-4XL

GLADIATOR FLEECE JACKET

- Fleece jacket with a front interactive zip with reversible zip puller fastening
- Two zipped waist pockets
- Elasticated cuffs and hem
- Draw cord and toggles inside the side hem
- Sewn on reflective tape
- Certifications & Standards: EN ISO 20471: 2013 CLASS 3
- **RIS 3279 TOM**
- Fabric: 100% polyester antipil fleece 380gsm
- Sizes: S-4XL



Part No.	Colour	Size
HVOFJ	Orange	S-4XL

WATERPROOF 3/4 JACKET

- 3/4 length jacket with a two-way open ended front zip fastening and press stud storm flap
- Fixed and concealed hood with draw cord and bell toggles
- Front map pocket, 2 lower welt pockets with flaps, 1 internal patch pocket
- Sewn on reflective tape and fully taped seams
- Sleeves have anti wicking cuffs
- Certifications & Standards: EN ISO 20471: 2013 CLASS 3
- EN 343 3:1
- Fabric: 300D PU coated Polyester, 100% Polyester quilted lining
- Sizes: XS-6XL



Part No.	Colour	Size
CTJ	Yellow	XS-6XL
CTJENGOR	Orange	XS-5XL

WATERPROOF BOMBER JACKET

- Bomber jacket with front two-way open ended zip fastening and press stud storm flap
- Concealed fixed hood with drawcord and bell toggles
- 2 lower welt pockets with stud pocket flap and 1 internal patch pocket with velcro fastening
- Elasticated hem and sleeve cuffs
- Fully taped seams and sewn on reflective tape
- Certifications & Standards: EN ISO 20471: 2013 CLASS 3
- EN 343 3:1
- Fabric: 300D PU coated polyester, 100% polyester padded lining
- Sizes: XS-5XL



Part No.	Colour	Size
HVB	Yellow	XS-5XL
HVBO	Orange	XS-5XL

HI VIS CLOTHING

VANGUARD HOODY

- Hi-Visibility fixed hood with a buttonhole on each side of the hood
- Draw cord & plastic Hi-Visibility colour toggles
- Ribbing on the sleeve cuffs and hem band
- Sewn on reflective tape
- Reinforced kangaroo pocket
- Certifications & Standards: EN ISO 20471: 2013 CLASS 2
- **RIS 3279 TOM (Orange only)**
- Fabric: Weight 300gsm, 100% Polyester
- Sizes: S-4XL



Part No.	Colour	Size
HOODIE	Yellow	S-4XL
HOODIEO	Orange	S-4XL

COMBAT TROUSERS

- Combat trousers with zip & button fastening and belt loops on the waist band
- Elasticated on both sides of the waist band
- 2 front slant side pockets, 1 front mobile phone pocket, 1 side leg pocket and 2 back pockets (all flaps have plastic press studs)
- Internal knee patch pockets & sewn on reflective tape
- Certifications & Standards: EN ISO 20471: 2013 CLASS 1
- **RIS 3279 TOM (Orange only)**
- Fabric: 80% Polyester, 20% Cotton, 275g
- Sizes: S/R/L, 28"-50"



Part No.	Colour	Size
TROUSERHIVISY	Yellow	R/L, 28"-50"
TROUSERHIVISO	Orange	S/R/L, 28"-50"

MARAUDER SOFT SHELL JACKET

- Two layer soft shell jacket with a front zip fastening and inner storm flap
- Pockets: two lower front hip pockets with zip fastening
- Bungee shock cords and adjuster on the hem
- Elastic on the cuffs
- Sewn on reflective tape
- Certifications & Standards: EN ISO 20471: 2013 CLASS 3
- Fabric: 2 layer 100% Polyester
- Sizes: S-4XL



Part No.	Colour	Size
HVSS	Yellow	S-4XL

HAWK WATERPROOF OVER TROUSERS

- Over trousers with an elasticated waistband
- 2 side access pockets
- Stud adjusters on the hem
- Fully taped seams and sewn on reflective tape
- Certifications & Standards: EN ISO 20471: 2013 CLASS 1
- EN 343 3:1
- Fabric: 300D, PU coated polyester
- Sizes: S-4XL



Part No.	Colour	Size
HVOT	Yellow	S-4XL

MARQUIS SOFT SHELL JACKET

- 2 layer soft shell jacket with a centre front zip fastening and inner storm flap
- 2 front lower zip pockets
- Bungee shock cords & adjuster on the inside hem
- Sewn on reflective tape
- Certifications & Standards: EN ISO 20471: 2013 CLASS 3
- **RIS 3279 TOM**
- Fabric: 94% polyester, 6% spandex, 2 layer construction
- Sizes: S-4XL



Part No.	Colour	Size
HVSSO	Orange	S-4XL

WARRIOR WATERPROOF OVER TROUSERS

- Waterproof over trousers with elasticated waistband
- Zip adjusters on the side legs at the hem
- Two side access pockets
- Fully taped seams
- Sewn on reflective tape
- Certifications & Standards: EN ISO 20471: 2013 CLASS 1
- EN 343: 2003 + A1: 2007/AC: 2009 CLASS 3:1
- **RIS 3279 TOM**
- Fabric: 100% polyester, 300D PU coated waterproof
- Sizes: S-4XL



Part No.	Colour	Size
HVOTO	Orange	S-4XL

WOMEN'S CLOTHING

DELUXE SHORT SLEEVE BLOUSE

- Ladies deluxe short sleeve blouse with a front button fastening
- Curved hem
- Front bust and body darts, back shaping darts
- Fabric: 65% polyester, 35% cotton, 115g
- Available in White, Black or Sky
- Sizes: 8-30



Part No.	Colour	Size
BLOUSESSWHITE	White	8-30
BLOUSESSBLACK	Black	8-30
BLOUSESSBLUE	Sky	8-30

DELUXE LONG SLEEVE BLOUSE

- Ladies deluxe long sleeve blouse with front button fastening
- Curved hem
- Front bust and body darts
- Back shaping darts
- Fabric: 65% polyester, 35% cotton, 115g
- Available in White, Black or Sky
- Sizes: 8-30



Part No.	Colour	Size
BLOUSELSWHITE	White	8-30
BLOUSELSBLACK	Black	8-30
BLOUSELSBLUE	Sky	8-30

SEMERU POLO SHIRT

- Ladies polo shirt with a three button placket
- Raised ribbed details on the collar and sleeve cuffs
- Fabric: 50% cotton, 50% polyester, 200g
- Available in Black or Navy
- Sizes: XS-2XL



Part No.	Colour	Size
POLOBLACKLADIES	Black	XS-2XL
POLONAVYLADIES	Navy	XS-2XL

ATILIAN SWEATSHIRT

- Ladies sweatshirt with drop shoulders and knitted rib cuffs, collar and waistband
- Fabric: 50% cotton 50% polyester 280g
- Available in Black or Navy
- Sizes: XS-2XL



Part No.	Colour	Size
SWEATSHIRTBLACKLADIES	Black	XS-2XL
SWEATSHIRTNAYLADIES	Navy	XS-2XL

LEONE FLEECE

- Ladies fleece with a front full zip fastening and interactive zip
- Comfort cuffs
- 2 hip pockets with zip closure
- Bungee shock cords at the internal hem for adjustment
- Fabric: 100% polyester antipil fleece 300g
- Available in Black or Navy
- Sizes: XS-2XL



Part No.	Colour	Size
FLEECEBLACKLADIES	Black	XS-2XL
FLEECENAVYLADIES	Navy	XS-2XL

DAVAAR WATERPROOF JACKET

- Ladies waterproof casual jacket with a heavy duty two-way front zip fastening and velcro double storm flap
- Detachable & concealed hood with lining, velcro fastening & bungee cord & toggles
- Pockets: 2 front zip pockets with welt cover, 1 map pocket, 1 internal zipped patch pocket
- Internal bungee cord & toggles on the inside hem
- Velcro adjustable cuff with a rubber adjuster
- Mesh lining on the main body
- Fully taped seams
- Fabric: 100% poly breathable & waterproof Hydra-Por micro fibre twill / 100% polyester mesh lining
- Available in Black or Navy
- Sizes: XS-2XL



Part No.	Colour	Size
JACKETWPLADIESBLACK	Black	XS-2XL
JACKETWPLADIESNAVY	Navy	XS-2XL

WOMEN'S CLOTHING

AMBER SOFTSHELL JACKET

- Ladies softshell jacket with a front zip fastening
- Two layer construction
- 2 side zip pockets
- Inner storm flap (running on from top zip cover)
- Bungee shock cords at hem
- Bungee adjuster
- Fabric: 94% polyester, 6% spandex, 260g 2 layer fabric construction
- Available in Black or Navy
- Sizes: XS-2XL



Part No.	Colour	Size
SOFTSHELLADIESBLACK	Black	XS-2XL
SOFTSHELLADIESNAVY	Navy	XS-2XL

ZEUS 2 HI VIZ COMBAT TROUSERS

- Combat trousers with a button fastening on the waistband & zip fly fastening
- Elasticated on the sides of the waistband
- 7 x belt loops
- 2 x front pleats under waist band
- 2 x front slant side pockets, 2 x lower side bellow pockets with velcro flap & reflective piping, 1 x rear patch pocket with velcro flap and reflective piping
- Internal bottom loading knee pad pockets
- Triple stitching on the front rise, back rise and outside legs
- Sewn on reflective tape 3 bands around each leg
- Double turn lockstitch hem
- 5 thread overlocked seams
- Certifications & Standards: EN ISO 20471: 2013 CLASS 3
- **RIS 3279 TOM**
- Fabric: 80% Polyester 20% Cotton 275gsm
- Sizes: R/L, 8-28



Part No.	Colour	Size
TROUSERLADIESHVO	Orange	R/L, 8-28

COMBAT TROUSERS

- Ladies combat trousers with a front zip & button fastening and 7 belt loops
- Elasticated on both sides of the waistband
- Triple stitching on the front & back + inside leg rise
- Darts on each side of the front & back
- Pockets: 2 slanted side pockets, 1 rear jetted pocket with button & loop, 2 side leg pockets with button flap
- Internal knee pocket, bottom loading
- Fabric: 65% polyester, 35% cotton, 245g
- Available in Black or Navy
- Sizes: S/R/L, 8-28



Part No.	Colour	Size
TROUSERLADIESBLACK	Black	S/R/L, 8-28
TROUSERLADIESNAVY	Navy	S/R/L, 8-28



ACCESSORIES

BASEBALL CAP

- 5 Panel Cap
- Brass buckle adjuster to the rear of the cap
- Padded Cotton Sweatband
- Air holes on the top of the cap
- Fabric: 100% Brushed Cotton
- Available in Black or Navy
- Sizes: One Size



Part No.	Colour	Size
BASEBALLCAPBLACK	Black	One Size
BASEBALLCAPNAVY	Navy	One Size

KNIT BEANIE HAT

- Turned up knit beanie hat
- One size
- Warm, comfortable fit
- Fabric: 100% Acrylic Knit
- Available in Black or Navy
- Sizes: One Size



Part No.	Colour	Size
BEANIEBLACK	Black	One Size
BEANIENAVY	Navy	One Size

BRANDS

Panacea



Synonymous with quality and complete with an enviable reputation, Panacea branded products not only feature great designed garments, they also come with the added benefit of the very best in fabrics. Market leading partners like GORE-TEX® supporting the brand, add even greater kudos to a now established range of garments. They offer the very best in performance and comfort, with designs that are ahead of their time.

Hydra Por



Developed from a wealth of experience and knowledge, tried and tested over many years. Exclusive branded ranges of specialist fabrics and hi visibility trims, from a simple waterproof fabric, on to more specific hi-vis, breathable, and rail industry specialist fabrics. All with a fully independent certification and a history of performance that is seldom rivalled by others.

Fastrack



Derived from a heritage in workwear, Fastrack is a range of leisurewear that performs like no other. Garments of the highest quality, using tried and tested fabrics that are capable and durable, yet smart enough for a more casual approach to work and, of course, leisure. Fastrack is widely used in the informal uniforms of so many leading companies.

Black Knight



Possibly the longest established brand in the industry, born from necessity and developed to meet the changing demands and requirements of the market place. A consistently high quality, yet affordable solution to most, if not all your workwear requirements. An extensive range of colours, styles, and fabric weights designed to perform wherever there used. Offers performance, quality and exceptional value.

Hercules



A specialist range of durable workwear geared towards the rail industry standards. Gives great performance and value while meeting the very stringent requirements of the latest TOM RIS 3279 standards. As the name suggests, Hercules products are built for strength and performance.

Smart Wear



A defined range of corporate shirting and blouses that befits the front of any house. Specially selected fabrics offering performance, consistency and excellent value, in a range of styles that are established as the staples of the corporate wear world. Relatively new from Orbit, but still benefitting from the experience that can only come from years of outstanding performance.

SIZE GUIDE

ALL SIZES ARE APPROXIMATE AND SHOULD BE USED AS A GUIDE ONLY.

OUTER JACKET

Garment Size	XS	S	M	L	XL	2XL	3XL	4XL	5XL
To Fit Size (Approx)	34-36	38	40-42	44	46-48	50	52-54	56	58
European Size	46	48	50-52	54-56	58-60	62	64	66	68

MEN'S SOFT-SHELL FLEECE

Garment Size	XS	S	M	L	XL	2XL	3XL	4XL	5XL
To Fit Size (Approx)	34-36	38	40-42	44	46-48	50	52-54	56	58
European Size	46	48	50-52	54-56	58-60	62	64	66	68

POLO SHIRTS / SWEATSHIRT / T-SHIRT / FLEECE

Garment Size	XS	S	M	L	XL	2XL	3XL	4XL	5XL
To Fit Size (Approx)	34-36	36	38-40	42	44-46	48	50-52	54-56	58
European Size	46	48	50-52	54-56	58-60	62	64	66	68

WORKWEAR TROUSERS

Garment Size	28	30	32	34	36	38	40	42	44	46	48	50
Size	XS	S		M		L		XL	2XL	3XL	4XL	5XL
To Fit Size Waist In Inch	28	30	32	34	36	38	40	42	44	46	48	50
To Fit Size Waist In cm	71	76	81	86	91	96	101	106	112	117	122	127
Inside Leg - Short - Inch	29	29	29	29	29	29	29	29	29	29	29	29
Inside Leg - Regular - Inch	31	31	31	31	31	31	31	31	31	31	31	31
Inside Leg - Tall - Inch	33	33	33	33	33	33	33	33	33	33	33	33
European Size	42	44	46	50	52	54	56	58	60	62	64	66-68

WORKWEAR SHORTS

Garment Size	28	30	32	34	36	38	40	42	44	46	48	50
To Fit Size Waist In Inch	28	30	32	34	36	38	40	42	44	46	48	50
To Fit Size Waist In cm	71	76	81	86	91	96	101	106	112	117	122	127
Inside Leg - Short - Inch	7	7	7.5	7.5	7.5	7.5	7.5	8	8	8	8	8
European Size	42	44	46	50	52	54	56	58	60	62	64	66-68

COVERALL

Garment Size	XS	S	M	L	XL	2XL	3XL	4XL
To Fit Size (Approx)	32	34-36	38-40	42-44	46-48	50-52	54-56	58
European Size	40	46	50	56	62	66	72	74

MEN'S SHIRT

Garment Size	14	14.5	15	15.5	16	16.5	17	17.5	18	18.5	19	19.5	20	20.5	21
Collar Size Inch	14	14.5	15	15.5	16	16.5	17	17.5	18	18.5	19	19.5	20	20.5	21
Collar Size	35	37	38	39	41	42	43	44	46	47	48	49	51	52	53
Size	XS	S		M		L		XL		2XL		3XL		4XL	
To Fit Chest Size In Inch		32-34		35-37		41-43		44-46		47-49		50-52		52-54	
European Size	35	37	38	39	41	42	43	44	46	47	48	49	51	52	53

MALE FORMAL TROUSERS

Garment Size	28	30	32	34	36	38	40	42	44	46	48	50	52	54
Inside Leg - Short - Inch	29	29	29	29	29	29	29	29	29	29	29	29	29	29
Inside Leg - Regular - Inch	31	31	31	31	31	31	31	31	31	31	31	31	31	31
Inside Leg - Tall - Inch	33	33	33	33	33	33	33	33	33	33	33	33	33	33
Inside Leg - Unfinished - Inch	36	36	36	36	36	36	36	36	36	36	36	36	36	36
European Size	42	44	46	50	52	54	56	58	60	62	64	66	68	70

SIZE GUIDE

WORKWEAR TROUSERS FEMALE

Garment Size	8	10	12	14	16	18	20	22	24	26	28
To Fit Size Waist In Inch	26.5	28	29	31	33	36	39	40.5	43	45.5	48
To Fit Size Waist In cm	67.5	71	74	79	84	91.5	99	103	109	116	123
Inside Leg - Short - Inch	27	27	27	27	27	27	27	27	27	27	27
Inside Leg - Regular - Inch	29	29	29	29	29	29	29	29	29	29	29
Inside Leg - Tall - Inch	31	31	31	31	31	31	31	31	31	31	31
European Size	34	36	38	40	42	44	46	48	50	52	54

OUTER JACKET FEMALE / SOFT-SHELL FLEECE FEMALE / POLO SHIRTS FEMALE / SWEATSHIRT FEMALE / FLEECE FEMALE

Garment Size	XS	S	M	L	XL	2XL
Female Sizes	8	10	12	14	16	18
Bust / Chest Size (approx.)	30-32	34-36	38	40	42	44
European Size	34	36	38	40	42	44

LADIES SHIRTS & BLOUSES

Garment Size	8	10	12	14	16	18	20	22	24	26	28	30
Garment Size	XS	S	M	L	2XL	3XL	4XL	5XL				
Bust / Chest Size Inch (approx.)	32	34	36	38	40	42	44	46	48	50	52	54
Bust / Chest Size cm (approx.)	81	86	91	97	102	107	112	117	122	127	132	137
European Size	34	36	38	40	42	44	46	48	50	52	54	56

FORMAL TROUSERS FEMALE

Garment Size	8	10	12	14	16	18	20	22	24	26	28	30
Inside Leg - Short - Inch	27	27	27	27	27	27	27	27	27	27	27	27
Inside Leg - Regular - Inch	29	29	29	29	29	29	29	29	29	29	29	29
Inside Leg - Tall - Inch	31	31	31	31	31	31	31	31	31	31	31	31
Inside Leg - Unfinished - Inch	36	36	36	36	36	36	36	36	36	36	36	36
European Size	34	36	38	40	42	44	46	48	50	52	54	56

WORKWEAR TROUSERS FEMALE

Footwear Sizes	3	4	5	6	7	8	9	10	11	12	13
European Footwear Sizes	36	37	38	39	41	42	43	44	46	47	48

HOW TO MEASURE

ENSURE TAPE MEASURE IS TIGHT AGAINST SKIN

• NECK

Measure round the neck where the collar sits, alternatively you can measure a shirt that fits well. Lay the shirt flat, start at the middle of the button and measure to the far end of the button hole.

• CHEST

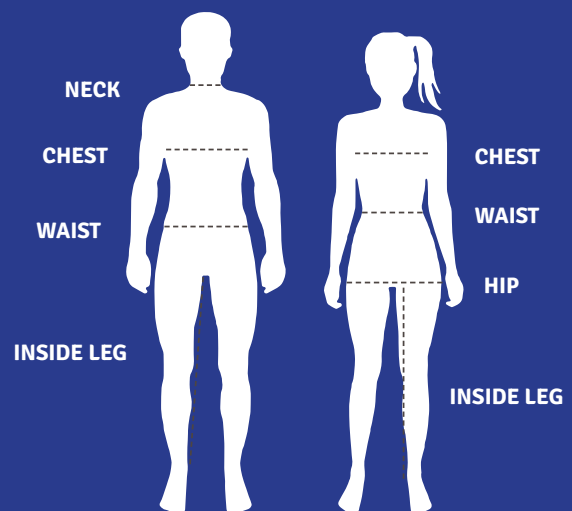
Measure around the fullest part of your chest and across your shoulder blades.

• WAIST

Measure around your natural waist (smallest part of the waist) keep the tape measure taut.

• INSIDE LEG

Measure from the inside leg at the crotch to where the trouser hem is to sit on the shoe, alternatively you can measure a trouser that fits you well.



Information: Garments have been manufactured to accommodate freedom of movement. Not all of the range is available in all sizes. Before customising garments, please ensure fit is correct as Lloyd & Jones do not accept the return or exchange of customised garments. All sizes are approximate and should be used as a guide only.

STANDARDS



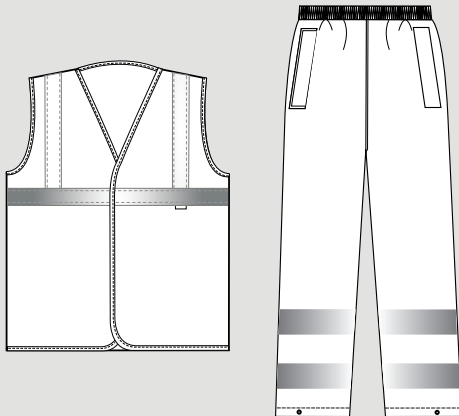
EN ISO 20471: 2013 HIGH VISIBILITY CLOTHING STANDARDS.

The standard specifies the requirements for high visibility clothing "which is capable of giving a visual signal to the user's presence". This now updated standard (from EN471) new has broadened the usage base and a distinction between different types of risk situations has been made. The defined risk situations will be the basis for which norm is applicable for the user. ISO EN 20471 is applicable to high-risk situations. Surface area of fluorescent and retro-reflective material determines the level and performance there are 3 levels.

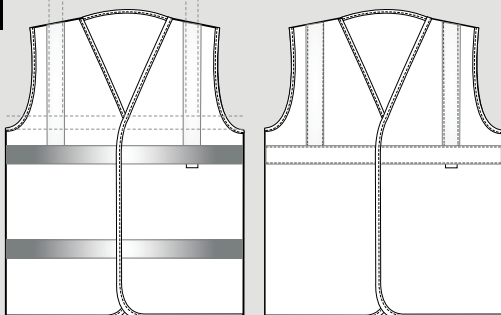
Minimum area with visibility material m²

	Class 1	Class 2	Class 3
Background material	0,14	0,50	0,80
Reflective material	0,10	0,13	0,20

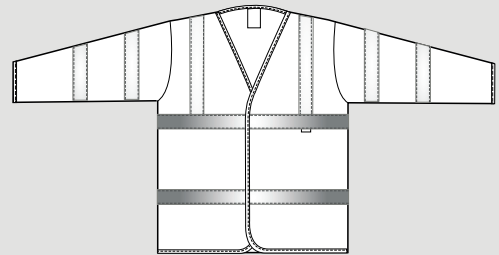
X - The number next to the graphical symbol indicates the garment class in accordance to Table 1. (max. class 3)



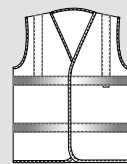
Minimum Level Minimum level of protection required for any persons working on a private road or to be used in conjunction with a higher classed garment. Must incorporate a minimum of 0.14m² of background material and 0.10m² of retroreflective material. (2 metres of 5cm wide reflective tape).



Intermediate Level required for any persons working on or near A and B class roads, also for delivery drivers. Must incorporate a minimum of 0.50m² of background material and 0.13m² of retroreflective material. (2.60 metres of 5cm wide reflective tape)



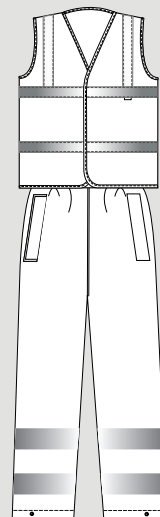
Highest Level Highest level of protection - required for any persons working on or near motorways or dual carriage ways or airports. Must incorporate a minimum of 0.80m² of background material and 0.20m² of retro-reflective materials. (4 metres of 5cm wide reflective tape).



Class 2 - Garment



Class 2 - Trousers



Class 3 - Ensemble

Garment Combinations.

The standard also permits this performance class to be met by specifying a single garment or a combination of garments - for instance, a class 2 jacket and a class 2 pair of trousers might be combined and certified as a class 3 combination. Where a combination is specified, this will be deemed to meet the requirements of the standard only when the supplier provides clear instructions on how the classification has been achieved. A class 3 garment is required to cover the torso and have sleeves with reflective bands or/and trouser legs with reflective bands. The area of background or retroreflective material that is covered by badges logos, lettering etc. shall be excluded from the calculation of the required minimum area (unless **these additions meet the requirements**).



RAIL SPECIFIC GARMENT STANDARDS.

The Rail Industry Standards Board (RSSB) published RIS-3279-TOM in December 2016. This will replace GORT3279 Issue 8 as it could not be retained as a National Safety Rule and is therefore reclassified as a Rail Industry Standard which takes effect from April 2017. This standard covers and incorporates the GORT 3279 previously used by the rail industry with little change. New stock post this date will start being marked with the new standards. The Fabric Colour is a specific type of Orange and has to be certified to conform or it cannot be used on UK Railways or surrounds.

INDEX

Part No.	Page
BASEBALLCAPBLACK	10
BASEBALLCAPNAVY	10
BEANIEBLACK	10
BEANIENAVY	10
BLOUSELSBLACK	9
BLOUSELSBLUE	9
BLOUSELSWHITE	9
BLOUSESSBLACK	9
BLOUSESSBLUE	9
BLOUSESSWHITE	9
BSPCB	5
BSPCBLACK	5
CTJ	7
CTJENGOR	7
FLAME/NAVY	5
FLAME/ORANGE	5
FLEECEBLACK	5
FLEECEBLACKLADIES	9
FLEECENAVY	5
FLEECENAVYLADIES	9
HOODIE	8
HOODIEBLACK	4
HOODIENAVY	4
HOODIEO	8
HVB	7
HVBO	7
HVFJ	7
HVOFJ	7
HVOSWEATSHIRT	7
HVOT	8
HVOTO	8
HVOTSHIRT	7
HVP	6
HVPLS	6
HVPLSO	6
HVPO	6
HVSS	8
HVSSO	8
HVSWEATSHIRT	7
HVTSHIRT	7

Part No.	Page
HVW	6
HVWLS	6
HVWLSO	6
HVWO	6
JACKETWPBLACK	5
JACKETWPLADIESBLACK	9
JACKETWPLADIESNAVY	9
JACKETWPNAVY	5
ORBSS2GV4BLACK	5
ORBSS2GV4GREY	5
ORBSS2GV4NAVY	5
POLOBLACK	4
POLOBLACKLADIES	9
POLONAVY	4
POLONAVYLADIES	9
SHIRTSLBLACK	4
SHIRTSLBLUE	4
SHIRTSLWHITE	4
SHIRTSSBLACK	4
SHIRTSSBLUE	4
SHIRTSSWHITE	4
SHORTSBLACK	6
SHORTSNAVY	6
SOFTSHELLBLACK	5
SOFTSHELLLADIESBLACK	10
SOFTSHELLLADIESNAVY	10
SOFTSHELLNAVY	5
SWEATSHIRTBLACK	4
SWEATSHIRTBLACKLADIES	9
SWEATSHIRTNAVY	4
SWEATSHIRTNAVYLADIES	9
TROUSERBLACK	6
TROUSERHIVISO	8
TROUSERHIVISY	8
TROUSERLADIESBLACK	10
TROUSERLADIESHVO	10
TROUSERLADIESNAVY	10
TROUSERNAVY	6
TSHIRTBLACK	4
TSHIRTNAVY	4



LLOYD & JONES
PROCUREMENT AND SUPPLY

**Find your local branch and
access our online store at**

www.lloyd-jones.com

**The products listed are a part of our core stock. Please contact
your local branch or area representative for details on our
extended clothing range.**

