

Half Mask Fitting Instructions



Alpha Sentinel Half Masks are ergonomically designed for optimum protection, comfort and PPE compatibility.

Alpha Sentinel Half Masks

SMALL	ASRAS0001BD
MEDIUM	ASRAS0001BF
LARGE	ASRAS0001BH

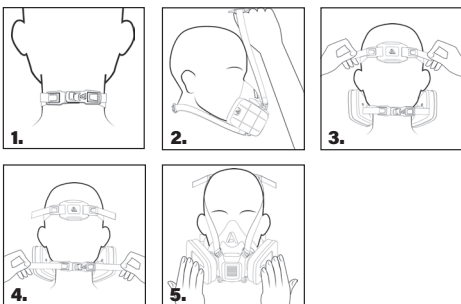
PRECHECKS

WARNING: Before donning the respirator, always perform the following checks:

- ▲ Ensure the respirator is clean and dry.
- ▲ Check the respirator, valves and harness for cracks, missing parts and other defects.
- ▲ Check that the appropriate filters are undamaged and installed correctly [see filter fitting guide].
- ▲ Both filter elements must be identical.

DONNING

1. Select the appropriately-sized mask [see size guide].
2. Slacken all head harness straps.
3. Place the lower harness over the head and around the neck [see Diagram 1]. Place your chin in the face-piece and pull the upper head harness over your head [see Diagram 2].
4. Ensure the head harness is sitting correctly, is laying flat and not bunched or twisted.
5. Tension the straps at the back of the head and neck until a firm, comfortable fit is achieved [see Diagram 3].
6. Adjust the fit of the mask on your face, with your chin firmly fitted in the face-piece and ensure that the mask is not too far up the face, and that it fits firmly but remains comfortable [see Diagram 4].
7. Perform a user seal check and readjust if required [see Diagram 5].



DESIGNED
& MADE IN
THE UK

DOFFING

1. Slacken the straps in pairs.
2. Pull the head harness forward over your head, unclip the buckle at the back of the neck and remove the respirator.
3. Decontaminate, clean, dry and store respirator as required.

The respirator should not be used in an oxygen deficient or oxygen enriched environment, for escape purposes or by people with facial hair growth between the skin and face-piece sealing surface such as stubble, beard growth or sideburns, which cross the respirator surface or in an atmosphere where contaminant concentrations exceed those levels that are dangerous to life.

Half Mask Fitting Instructions



PRE-USE WEARER-SEAL CHECK

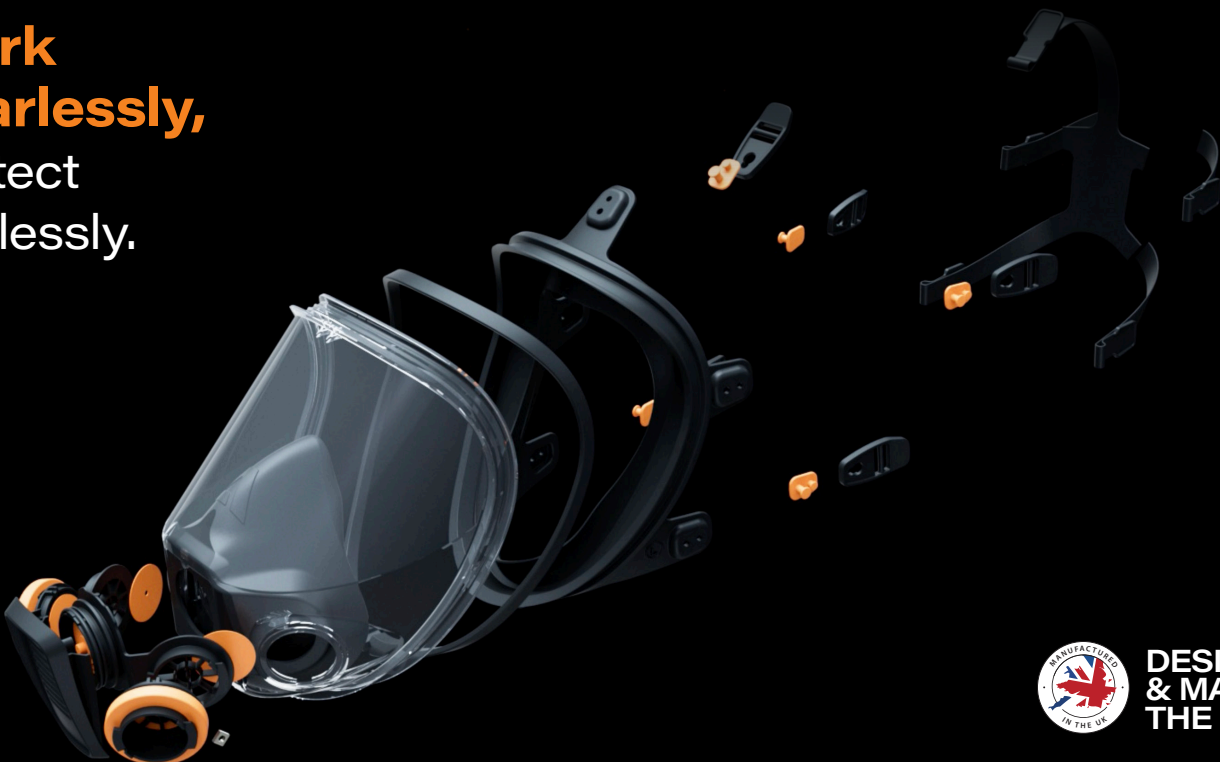
WARNING: A pre-use wearer-seal check should be carried out each time a fit-tested facepiece is worn and before entering the hazardous environment. Failure to achieve a face-to-respirator seal before you entering a hazardous atmosphere may result in little or no respiratory protection.

1. Place palms of hands over filter element inlet to provide a seal.
2. Inhale gently
3. The respirator should pull inwards on the face (vacuum effect).
4. If air leaks between the face and the seal adjust the harness straps for more secure seal and repeat check.

If leak test fails, the mask cannot be used and should be checked for serviceability.



**Work
Fearlessly,
Protect
Tirelessly.**



**DESIGNED
& MADE IN
THE UK**